



DALBY DIAMONDS™
SCANDINAVIAN DIAMOND TRADE

COLORED DIAMONDS

A SIMPLIFIED GUIDE TO CHOOSING YOUR DIAMOND RING

CHOOSING THE DIAMOND

PICK YOUR COLOR

AND YOUR BUDGET...



When picking your color, pick something you love, but don't forget your price point! Certain colors are rarer than others. The rarer the color the higher the price tag.

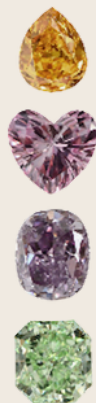
AFFORDABLE



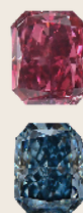
Brown, Grey, Black



Yellow



Orange, Pink, Purple, Green



Red, Blue

HIGHEST VALUE

PICK YOUR SIZE



Note: The sizes you see here should give you a general idea of what each diamond weight looks like on your hand. It is not exact. The way an individual diamond is cut will slightly affect its size

0.25 pt - 4.1 mm



2 ct - 8.1 mm

0.5 pt - 5.1 mm



3 ct - 9.3 mm

0.75 pt - 5.8 mm



4 ct - 10.2 mm

1 ct - 6.4 mm



5 ct - 11 mm

1.5 ct - 7.4 mm



0.25 pt - 5x3 mm



2 ct - 10.5x7 mm

0.5 pt - 6x4 mm



3 ct - 11.5x7.5 mm

0.75 pt - 7.5x5 mm



4 ct - 13x8.5 mm

1 ct - 8x5.5 mm



5 ct - 14x9.5 mm

1.5 ct - 9x6 mm






DALBY DIAMONDS™
SCANDINAVIAN DIAMOND TRADE

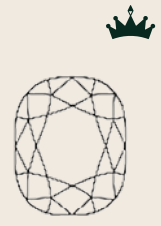
PICK YOUR SHAPE

WHAT'S YOUR TASTE ?

 These shapes best enhance a colored diamond's color and are more commonly found. But, if you love a different shape, go for it! A colored diamond is beautiful no matter what!



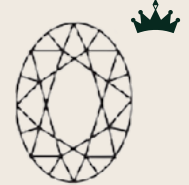
Radiant



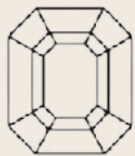
Cushion



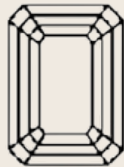
Pear



Oval



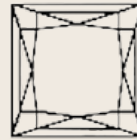
Asscher



Emerald



Round



Princess



Heart



Marquise

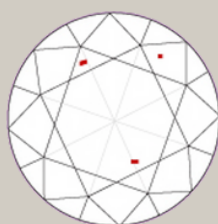
CHOOSE YOUR CLARITY



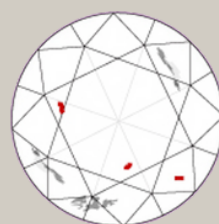
FLAWLESS/
INTERNALLY
FLAWLESS
(FL-IF)



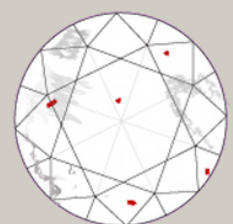
VERY VERY
SMALL
INCLUSIONS
(VVS1-VVS2)



VERY SMALL
INCLUSIONS
(VS1-VS2)



SMALL
INCLUSIONS
(SI1-SI2)



IMPERFECT
(I1-I2)

A TIP FROM THE EXPERT

There is many different combinations of how you can design your colored diamond ring. However, some shapes and settings compliments the color of the diamond better than others. Therefore, always be sure to consult a diamond expert in your design process.





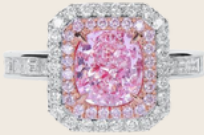
DALBY DIAMONDS™
SCANDINAVIAN DIAMOND TRADE

CHOOSING THE SETTINGS

HALO



DOUBLE HALO



TRIPLE STONE



MILGRAIN



PICK YOUR SETTING

THE RING YOU'LL LOVE

BEZEL



Where is the solitaire setting?

The classic solitaire setting might not be the best choice for your colored diamond since the setting doesn't allow much room for the needed "cup".



Colored diamond rings need a "cup" underneath the diamond to strengthen the color. These settings are the most common for colored diamonds because they allow for the "cup".

PICK THE METAL COLOR

FOR YOUR PRONGS



A colored diamond is usually set with prongs in a color that will enhance the color of the stone. The rest of the ring can be whichever color you choose

